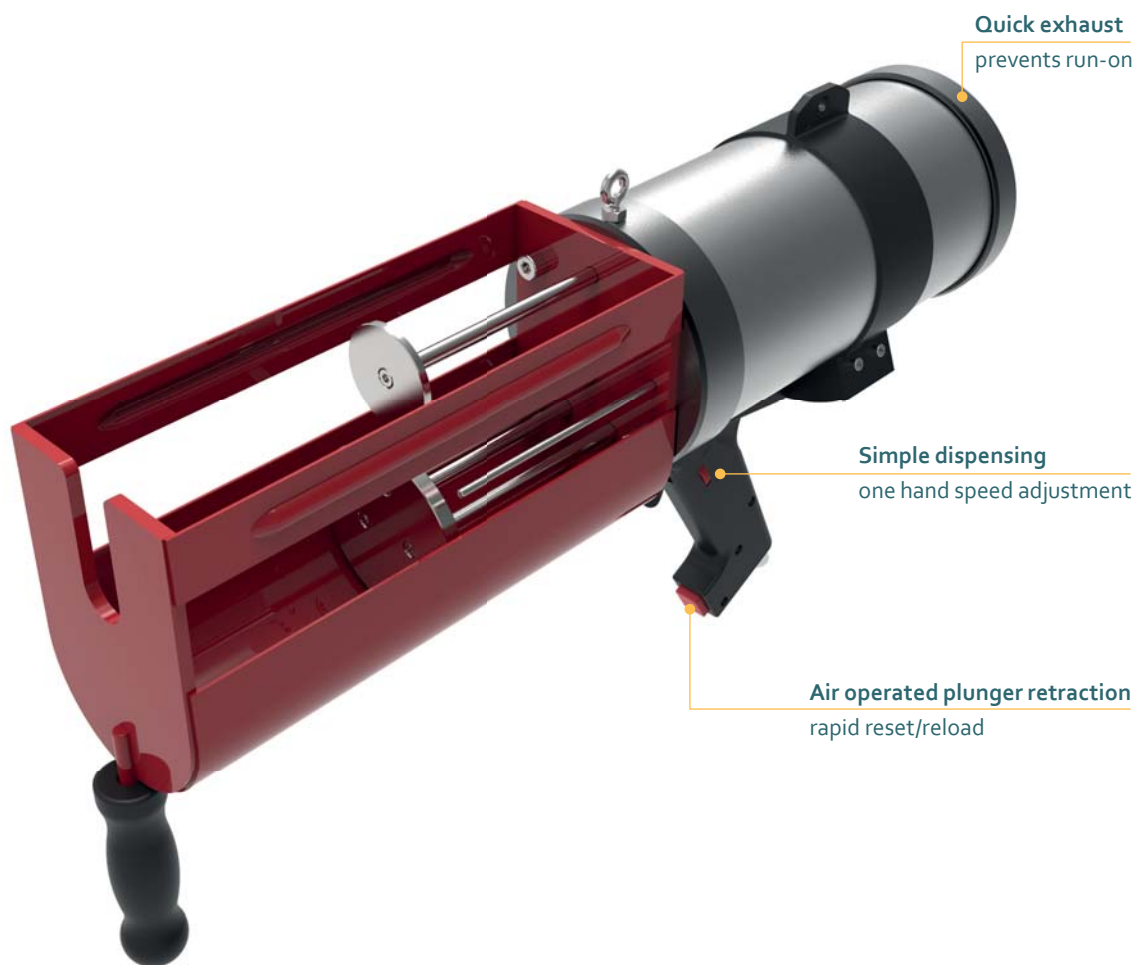


TS471

1400 ML CARTRIDGE DISPENSER



Model shown: TS471 1400 mL

FEATURES

- Quick exhaust
- Simple dispensing
- Air operated plunger retraction
- Customization possible

BENEFITS

- Prevents anti-drip
- One-hand speed adjustment
- Quick cartridge exchange
- Customer labelling

APPLICATIONS



PRODUCT BY RANGE



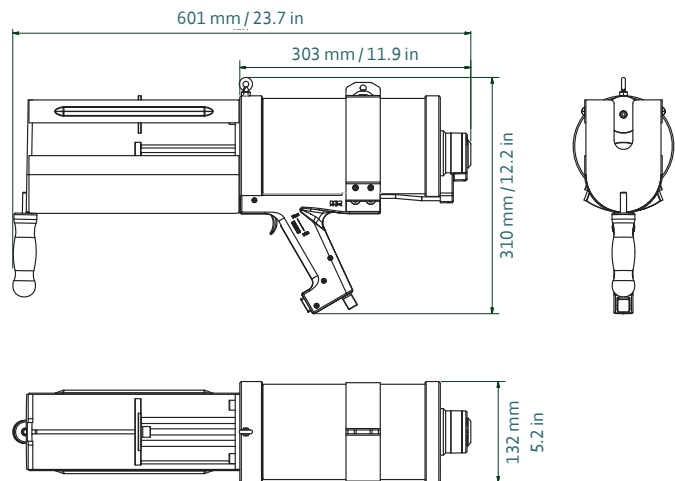
TS471

THE TS471 2-COMPONENT PNEUMATIC DISPENSERS AIR OPERATED PLUNGER RETRACTION OFFERS RAPID RESET AND RELOAD WHILE ANTI-DRIP FUNCTION MAKES FOR EASY AND CLEAN DISPENSING.

SPECIFICATIONS

- Lightweight: 3.95 kg / 8.8 lbs
- Cartridge Holder Length: 298 mm / 11.7 in
- Maximum Thrust: 8.3 kN
- Maximum Pneumatic Pressure: 8 bar / 116 psi
- Air Consumption: 40 litres/min
- Handle Material: Reinforced Nylon
- Cartridge Holder Material: Aluminum
- Frame Material: Steel
- Cartridge Capacity: 1400 mL (49.3 oz)
- Cartridge Ratio: 3:1
- Viscosity: Medium/High
- Standard Color: Black/Red
- Customized versions on demand

DIMENSIONS



Part number	Article number	Packaging
DP2K 1400-03-830-001	153201	1 per Box

MATCHING MIXPAC™ CARTRIDGES

COMPATIBLE SIDE-BY-SIDE CARTRIDGES



Plastic Cartridge
1400 mL / 3:1

3:1	mm	inch
l	235.0	9.25
a	Ø 96.4	Ø 3.8
b	Ø 60.0	Ø 2.36
c	157.5	6.2

CONVERSION KITS

MATCHING ACCESSORIES