

MK™ H40+™ MK™ H40+ Combi Dispenser



Table of Contents

General Information.....	Page 3
Product Information & Packaging.....	Page 9
Q & A.....	Page 14



General Information

Product Range

Products affected by this change: H40 – H45 – H2 – H2P/H3P



H40



H45



H2



H2P/H3P



H40+



H40+ Combi



H4o+ Product Overview



H4o+ Combi Product Overview

Redesigned drive with 20% more thrust (3kN up from 2.5kN)

360° rotating frame

for uninterrupted bead orientation to access hard-to-reach areas

Quick-change plunger

allowing you to quickly go from foil sachet to cartridge

Robust aluminium handle & steel frame construction

designed for durable and reliable single-handed dispensing

Integrated trigger brake release w/ anti-drip mechanism

for precise bead application performance

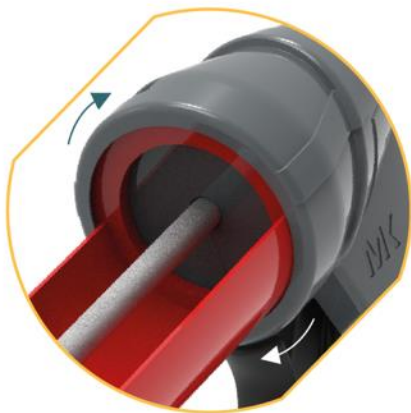


H4o+ Product Overview

The new MK™ H4o+ dispenser benefits from a new ergonomic design for faster and easier professional dispensing, out-performing both its predecessor (H4o) and other similar models. It is the perfect device for applying adhesives and sealants in remote locations or tight spaces, where compressed air and battery options are not appropriate or available.



U-shaped opening with easy cartridge snap-fit and wider MIXPAC cartridge range compatibility



360° rotating frame for uninterrupted bead orientation to access hard-to-reach areas



Robust aluminium handle & steel frame construction designed for durable and reliable single-handed dispensing



Integrated trigger brake release w/ anti-drip mechanism for precise bead application performance

H4o+ Combi Product Overview

The new MK™ H4o+ Combi dispenser is built on the same solid foundation as the H4o+ with its new ergonomic design, robust aluminium design and steel frame construction. It even benefits from an integrated trigger break release with anti-drip mechanism.

Where the H4o+ Combi is different is its larger more versatile barrel-design that's capable of taking sachets or cartridges.



Quick Change Plunger
allowing you to quickly go
from sachet to cartridge



Versatile
The Combi version can be used with a
wide range of materials including
cartridges and sachets (up to 600 mL)



Product Information Packaging



INDUSTRY



Product Information

Order options

Medmix ID	Material Description	Basic Data Text Description	Comment
184013	DM1K 310-CA-R18-601	MK Manual H4o+ 310ml Cartridge *8	8 per box
184014	DM1K 310-CA-R18-602	MK Manual H4o+ 310ml Cartridge *1	1 per box
184756	DM1K 600-CM-R18-401	MK Manual H4o+ Combi 310-600mL *10	10 per box

Product Specs

	H4o+	H4o+ Combi
Weight	880g (unboxed)	1040g (unboxed)
Dimensions	242mm / 9.5in	535mm / 21in
Max. Thrust	3.0 kN	3.0 kN
Handle	Aluminium	Aluminium
Frame/Barrel	Steel frame	Aluminium barrel
Cartridge capacity	310mL	600mL
Mechanical Advantage	18:1	18.1

